

GLOBBER

www.globber.com



E-MOTION 11
E-MOTION 160

150W

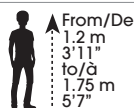
ELECTRIC SCOOTER/
TROTINETTE ÉLECTRIQUE



EN14619:2019
CLASS A 70KG MAX

8+

70 kg
max 154lbs



Please keep these instructions for future reference.
 EN14619:2019 CLASS A 70KG MAX
 READ THE INSTRUCTIONS PROVIDED BY THE MANUFACTURER BEFORE USING.



1 - SAFE USE OF THE ELECTRIC SCOOTER

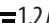
This appliance can be used by children aged from 8 years and above and persons with reduced physical, sensory, or mental capabilities or lack of experience and knowledge if they have been given supervision or instruction concerning use of the appliance in a safe way and understand the hazards involved. Children shall not play with the appliance. Cleaning and user maintenance shall not be made by children without supervision.

Warning: Never use the product close to a water source. Stop using the product when damaged.

DETACHABLE SUPPLY UNIT

WARNING: For the purposes of recharging the battery, use only the detachable supply unit provided with this appliance. This appliance contains batteries that are replaceable only by skilled persons. Persons with reduced physical, sensory or mental capabilities or lack of experience and knowledge shall not play with the appliance.

2 - TECHNICAL SPECIFICATION

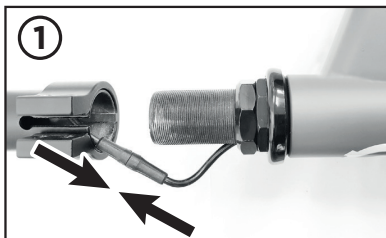
Material	Composite, aluminium, polypropylene, TPR, rubber
Assembled Dimension	L83cm x W49.5cm x H81-91cm
Weight	7.2kg
User height / Maximum weight	1.2-1.75m/70kg
Maximum Speed	Speed mode 1: 6km/h (3.7mph) Speed mode 2: 15km/h (9.3mph)
Maximum range per charge	9-11km*
Operating temperature	0°C - 40°C
Motor Power	150W
Front Wheel Size	5.9" (150mm)
Rear Wheel Size	5" (128mm)
Battery Capacity (Ah)	4.0Ah
Battery voltage	21.6V (end-of-discharge voltage: 18V; upper limit of the charging voltage: 25.2V)
Charger Model No.: FY0422401200E	AC input: 100-240V - 50/60HZ - 1.50A DC output: 24V  1.2A
Charging time	4 hours
Sealing around compartment	IPX4

*Depending on the user's weight.
 Original instructions

3 - ASSEMBLY

UNFOLD THE SCOOTER

1. Prior to inserting the steering column into the threaded axle, safely plug the accelerator throttle cable.
 - Insert the steering column into the threaded axle; do not tighten the clamp at this stage.
 - Caution: Make sure the accelerator cable is not pinched and is firmly plugged when inserting the steering column into the threaded axle.
2. Place the handlebar in the housing at the top of the steering column and secure the clamp with the two screws.
3. Align the handlebars with the wheel axle; then, tighten the clamp at the bottom of the threaded axle. The required clamping/ tightening force is between 5 to 7 N/m.



MOUNTING FRONT LIGHT & BELL:

Take the LED light out from the paper box; then, install the LED light to the top part of the handlebars; place it on the left-hand side with the light facing forward. Fix it tightly with the plastic hook.

To fix the bell on the handlebars, loosen the screw to open the loop and mount the bell on the right-hand side of the handlebars. Tighten the screw to fix its position.



4 - MODE OF OPERATION AND USE

ON/OFF FUNCTION

- To start the scooter, press once the ON/OFF button located at the top of the handlebars. Always remember to press the ON/OFF button to start the scooter.
- When the taillight lights up in red, the scooter is in "ON" mode. The LED battery gauge and LED side lights will light up too. The deck is equipped with LED lights on both sides.
- To turn off the scooter, press and hold the ON/OFF button until the taillights turn off; release the ON/OFF button and the LED battery gauge lights and the LED side lights will also turn off.
- Your E-MOTION 11/E-MOTION 160 will automatically turn off after 10 minutes of inactivity; the battery lights' signal on the deck will also turn off.

START-UP

Once the scooter is in "ON" mode, it is now ready to start. Two actions are necessary to engage the motor:

- Press the acceleration throttle located at the right side of the handlebar to start and accelerate. Kick start to activate the motor. Push your scooter to reach a speed of 3km/h.
- Be aware that once the motor is turned ON, reducing your speed below 3km/h does not automatically turn off the motor; read the "STOP" paragraph section for instructions on how to turn off the motor.

HOW TO RIDE THE SCOOTER

- Make sure the scooter is in "ON" mode.
- Place your feet on the deck.
- Push the scooter with your foot until you reach a speed of 3km/h to engage the electric motor.
- Press the throttle accelerator located at the right side of the handlebar to start and accelerate.
- The maximum speed is 15km/h in speed mode 2 and 6km/h in speed mode 1.
- To slow down, you can simultaneously or independently activate both:
 - The rear foot brake by pressing with your rear foot.
 - Release the throttle accelerator while keeping both hands on the handlebars.

STOP

- To stop, keep pressing the rear brake continuously for 3 seconds and wait for the scooter to stop safely to alight the scooter.
- At any time, you can remove your finger from the throttle accelerator to automatically shut down the motor, for example in an emergency. The battery will automatically turn itself off when the motor is not engaged for more than 10 minutes.

SPEED MODE SELECTION

When you first press the ON/OFF button, the scooter is by default in speed mode 2. When the scooter is "ON", but the motor is not engaged, the scooter is in standby mode.

In standby mode, you can switch between the 2 speed modes by double-clicking the ON/OFF button.

- Speed mode 1: max speed is 6km/h, and the taillight, battery gauge, and side LED lights will flash.
- Speed mode 2: max speed is 15 km/h, and the taillight and battery gauge will light up continuously while the side LED lights will flash slowly.

To switch from speed mode 2 to speed mode 1, double-click the ON/OFF button. The taillight will start flashing in red. The battery gauge and the LED lights on both sides of the deck will also flash, showing that the scooter is now in speed mode 1. The max speed in this mode is 6km/h.

To switch back to speed mode 2 from speed mode 1, double-click the ON/OFF button again. The taillight will stop flashing in red and stay on. The battery gauge will stay on and the LED lights on both sides of the deck will flash slowly, showing that the scooter is now back in speed mode 2. The max speed in this mode is 15km/h.

5 - CHARGING

When the battery signal light on the deck becomes low, you can recharge the battery with the specific charger included in pack.

IMPORTANT:

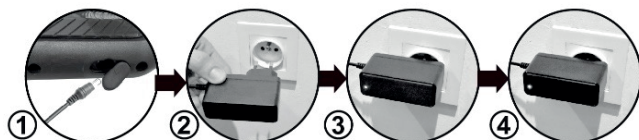
The battery has temperature protection. If you try to charge the scooter just after riding, the battery pack might be at a high temperature, and it will not accept charging until about 25 minutes after the battery pack cools down.

Warning for battery charging: Use only the charging device provided with your scooter

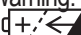
 (model ref. FY0422401200 E)

Your electric scooter is delivered with a specific charger. Only charge the scooter indoors and with this specific charger. The external flexible cable of this charger cannot be replaced; in case of damage, the charger must be recycled.

1. To charge your electric scooter, make sure the electric scooter is in "OFF" mode by switching OFF; then, remove the waterproof cap from the port and plug in the charger. For safety reasons, ensure the charging port is always dry before starting to charge.
2. Plug the charger into a suitable power source.
3. When the LED on the charger is red, the battery is charging.
4. When the LED light changes to green, the battery is fully charged; this will take approximately 4 hours. You must stop charging it when the signal light turns green; charging the battery for too long will reduce its lifetime.



The protective cover is used to protect the charging port from splashing water. Be sure to replace the cap after each charging and before each use.

- Children shall not play with the appliance.
- Cleaning and user maintenance should not be done by children without supervision.
- Warning: The charger (model ref. FY0422401200E) is specific for lithium battery pack 21.6V and 4.0Ah ( Model No.: 6S2PSCOOTERM20).

- The battery charger has an LED indicator: The GREEN light indicates the battery is fully charged or disconnected; the RED light indicates the battery is charging.
- Do not recharge non-rechargeable batteries. It may cause an explosion.
- Use only the charger supplied with your electric scooter. Using a charger other than that supplied will invalidate the warranty.
- To optimise the performance and lifetime of your electric scooter battery, fully charge the battery before using it for the first time, and fully charge it once a month.
- Do not cover the battery compartment or the charger. There must be good ventilation conditions at all times during charging.
- The charging environment must be clean. Ensure there are no traces of dampness or water in the electric socket before plugging in.
- Ensure you use a standard socket.
- Do not switch on the scooter during charging.

Warning. Do not use the battery or the device in the following cases:

1. The battery gives off a smell or the temperature inside the appliance is too high.
2. Leaks on the deck of the scooter.

If in doubt, please email us at contact@globber.com

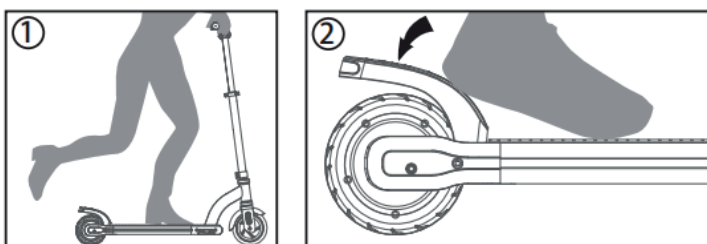
IMPORTANT:

- Prior to attempting by yourself any repair actions on the product, please contact your retailer or contact us at contact@globber.com to get the full technical and safety recommendations.
- In case of battery leakage, do not touch it.
- Keep children away from the battery if it is leaking or displays any other problems.
- Batteries contain dangerous substances. Do not attempt to open the battery or to insert any solid or liquid substance into the battery or into the body of the appliance.
- Using the battery is subject to authorisation by the local authorities.

6 - TIPS FOR USE / CAUTION

Before and after using your appliance, check all the connections: The brake, the height adjustable clamp, and the wheel axles must be correctly adjusted and undamaged. Also check wheel wear. Check the height of the steering system and make sure that the nuts are tightened and the handlebars and front wheel are perpendicular. Also, eliminate any sharp edges caused by use.

1. If the scooter battery is low or discharged, the appliance can be used as a standard scooter. To do so, stand on the scooter with your hands on the handlebars and push with one foot to make it move forward. Proceed with caution to start.
2. A mechanical foot brake is located at the rear of the scooter. When necessary, press it to slow down. Press gradually to avoid skidding or loss of stability. The metal or aluminium brake may be hot after repeated braking. Avoid touching it during and after use.



Warning. Any load attached to the handlebars will affect the stability of the vehicle.

When you use your electric scooter, ensure your position is always correct and respect the local highway code and regulations. Always speed up and slow down gradually.

The scooter is for teenagers. It is not a toy. It is a means of transport and not designed for extreme sports, such as jumps, ramps, ollies, etc. Under no circumstances should the product be used in a skatepark for "aggressive" use (figures, etc.).

Use with caution on clean, dry flat surfaces and, if possible, away from other users. Respect the road safety regulations.

Braking distances are increased in rainy weather or when wheels are wet.

Traffic in the city has many obstacles to cross, such as curbs and steps. It is recommended to avoid obstacle jumps. It is important to anticipate and adapt your trajectory and speed to those of a pedestrian before crossing these obstacles. Warning: In France, this scooter is not allowed on public roads.

It is also recommended to get off of the vehicle when these obstacles become dangerous due to their shape, height, or slippage.

Take the time to learn the basics of the practice to avoid any serious accident that can take place in the first months of use. Reach out to your seller so they can refer you to an appropriate training organization.
Do not divert the use of the vehicle.

WARNING! Keep plastic covering away from children to avoid suffocation.

The average A-weighted emission sound pressure level is lower than 70 dB(A).

Check local laws concerning the use of scooters. Respect all the traffic rules and road signs. Keep away from pedestrians or other users on the public highway.

Preferably use on flat, clean surfaces free from gravel or grease. Avoid bumps and drain gratings likely to cause an accident.

Avoid high traffic areas or overcrowded areas.


Alight the scooter and walk across streets and crosswalks.

At all times, anticipate your trajectory and your speed while respecting the code of the road, the code of the sidewalk, and the most vulnerable.

In all cases, take care of yourself and others.

Notify your presence when approaching a pedestrian or cyclist when you are not seen or heard.

Always wear shoes, and we strongly advise you to wear trousers and long-sleeved shirts to avoid injury if you fall.

Warning. Wear personal protection equipment, including wrist guards, gloves, knee and elbow protectors, and a helmet. 

Do not use in the dark if the front light is turned off or not bright enough.

The electric scooter is not designed for acrobatics. Do not attempt to jump or execute dangerous manoeuvres.

Do not ride more than one person on the scooter.

You are advised not to leave the electric scooter outside in damp or wet conditions.

Do not touch the hub motor located in the rear wheel when in use or immediately after riding.

Check that the kick stand is fully folded before starting. When parking, check that the kickstand is properly unfolded; the unit must be parked on a flat ground to avoid any risk of falling. If the unit is not equipped with a kickstand, ground parking is recommended, making sure you do not interfere with the traffic.

It is highly recommended to wear reflective clothing and accessories to enhance/increase visibility.

When the product is no longer used, it should be stored in a safe place or put under protection (lock system) to prevent unauthorized use of commands/product.

Vibration and shock: Using an electric scooters can generate significant vibrations and shocks depending on the surface on which it is used. Do not use your scooter for too long, and immediately stop using if discomfort is caused by vibrations. The total hand-arm vibration value does not exceed 2.5m/S².

In case of fall or accident, always check that the product is switched off, and clear the way if possible.

The materials used for the construction of the machine are non-toxic, and have been analyzed according to the following directive: 2011/65 / EU Rohs. A safety data sheet has also been established for the battery.

The safety and reliability of the control systems have been evaluated according to the following guidelines: 2014/30 / EU Electromagnetic Compatibility Directive and 2014/35 / EU Low Voltage Directive.

In France, this product is NOT equipped to circulate on certain public roads for users of at least 12 years old. Consult this website: service.public.fr/particuliers/vosdroits/F308.

To avoid pinching and entrapment, don't put your fingers in moving parts.

7 – MAINTENANCE

Warning: As with any mechanical component, your vehicle is subject to high stresses and wear. The various materials and components may react differently to wear or fatigue. If the expected service life for a component has exceeded, it may break suddenly, thereby risking injuries to the user. Cracks, scratches, and discoloration in the areas subject to high stresses indicate that the component has exceeded its service life and should be replaced.

Caution: The rear wheel has a motorised part that can only be dismantled or changed by a qualified technician. If you wish to check the mechanical parts or change it, contact a qualified technician or a Globber representative at contact@globber.com

Eliminate sharp edges generated by use.

Do not modify or transform the vehicle, including the steering tube and sleeve, stem, folding mechanism, and rear brake, or the warranty will be invalidated.

Accessories or any additional items that are not approved by the manufacturer shall not be used.

To clean: Disconnect the charger and turn off product; wipe it with a dry cloth.

The lithium battery: To guarantee the battery lifetime, charge it when its level is low. If it is not used for a long period of time, you are advised to charge it once a month. If you wish to check the battery or change it, contact a qualified technician or a Globber representative at contact@globber.com.

The recommended storage temperature for the battery is between 5°C and 30°C.

Do not use or place the electric scooter in an environment where the temperature exceeds 40°C to avoid any lithium battery malfunction, which may lead to it catching fire.

Never store the electric scooter in a car during hot weather to avoid any danger of this.

Bearings: Avoid riding through water, oil, or sand, which could damage your bearings. To maintain your bearings, check regularly that the front wheel turns properly by turning the electric scooter upside down and pushing the wheel with your fingers. If the front wheel does not turn, remove it and check the condition of the bearings. First unscrew the wheel axle. Remove the axle and remove the wheel. Carefully push the two bearings out of their seating. If they are chipped or crushed, buy new ones. If there is no visible damage, oil them. To do so, remove any traces of grease, mud, or dust from the bearing using a paper towel or a cloth; then, grease them either with a self-lubricating spray or by soaking them in oil overnight (turn the bearings several times in the oil before leaving them to soak). Refit the bearings and axle, then the front wheel.

The wheels: The wheels wear out over time and may even develop holes if the scooter is used on rough surfaces too much. This is particularly true of the rear wheel on which the brake is applied. Check them regularly and have them changed for better safety.

Product modifications: The original product must by no means be modified except for the maintenance-related changes mentioned in these instructions.

Nuts, axles and other self-locking fasteners: these should also be checked regularly. They can become loose after a while in which case they should be tightened. They can become worn and not tighten properly, in which case they should be replaced.

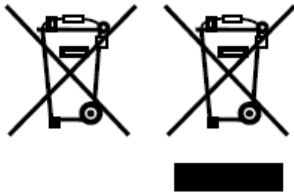
8 - DISPOSAL OF END-OF-LIFE APPLIANCE

The appliance must be disconnected from the main power supply when removing the battery.

The battery must be removed from the appliance before the appliance is discarded.

The battery must be disposed of safely by taking it to the most suitable collection point.

Do not place with the waste; place in recycling bin.



9 - ADDITIONAL INFO

For questions and inquiries, please contact us at contact@globber.com

WARRANTY

The manufacturer warrants this product to be free of manufacturing defects for period of 2 years from the date of purchase. This Limited Warranty does not cover normal wear and tear, tire, tube or cables, or any damage, failure or loss caused by improper assembly, maintenance, or storage.

This Limited Warranty will be void if the product is ever

- Used in a manner other than for recreation or transportation;
- Modified in any way;
- Rented

The manufacturer is not liable for incidental or consequential loss or damage due directly or indirectly to the use of this product. Globber does not offer an extended warranty. If you have purchased an extended warranty, it must be honoured by the store at which it was purchased.

E-scooter batteries are covered by a 1-year warranty from the date of purchase.

For your records, save your original sales receipt with this manual and write the product name below.

.....

SPARE PARTS

To order spare parts for this product, please visit our website www.globber.com

10 – TROUBLESHOOTING

Problem	Possible cause	Solution
Scooter will not run	Battery is not charged - battery gauge shows OFF light	Fully charge the battery. The first charge takes approximately 4 hours and up to 3 hours for recharges.
	Wires or connectors are loose or unplugged	Check to ensure that the charger is securely plugged into both the wall socket and the scooter.
Scooter run-time is short	The battery does not charge completely. - Battery gauge shows OFF light Or - Battery gauge shows only 1 to 3 graduations	Fully charge the battery. The first charge takes approximately 4 hours and up to 3 hours for recharges. Check to ensure that the charger is securely plugged into both the wall socket and the scooter. Make sure that the wall socket is connected to the mains power supply.
	Battery will not charge fully	1. You have been using your scooter for a while. The battery has lost its capacity. The average rechargeable battery life is 1 to 2 years depending on scooter conditions and use, the maintenance (at least one charging per month), and storage (dry place at temperature between 5 and 30 degrees) 2. Your scooter is new and has low autonomy. In both cases (1 and 2), the battery needs to be changed; please contact your dealer.
	Excessive use of scooters	Excessive overload refers to a steep incline or when the rider is too heavy. The motor has overload protection to ensure safety. If such a sudden stop of the scooter occurs, wait about a minute before switching the battery on again.
	Wires or connectors are loose or unplugged	Check all wires and connectors to make sure they are connected and secure.
	Improper use in wet environment has led to an electronic short	E-MOTION 11/160 is not designed for wet, rain, or puddle use. If your problem arises as a result of such use, please contact your dealer or a Globber representative at contact@globber.com
	Scooter is overloaded	Be careful not to overload the scooter beyond the maximum weight limit (70kg). Be careful not to use your scooter on steep slopes, and do not pull or tow objects or people. Avoid overloading the scooter as this will cause premature wear of the battery and its components.
	Unsuitable riding conditions	Ride only on solid, flat, clean, and dry surfaces, such as a bike path or level ground.